



SonicWALL TZ Series

NETWORK SECURITY

Uncompromising Security and Performance

- **Uncompromising performance**
- **SonicWALL Reassembly-Free Deep Packet Inspection™**
- **SonicWALL Unified Threat Management (UTM)**
- **SonicWALL Comprehensive Anti-Spam Service**
- **SonicWALL Application Firewall**
- **Modular 3G wireless broadband**
- **Secure 802.11b/g/n wireless LAN (WLAN)**
- **Advanced IPSec and SSL VPN**
- **SonicWALL PortShield port-level security**
- **Automated failover and failback**
- **Intuitive configuration wizards**
- **Robust Voice and Video over IP (VoIP)**
- **Global Management System**

Network security can not stand still while driving factors like Web 2.0 advancements, expanding bandwidth and emerging threats rapidly evolve and overtake its capability. By leveraging SonicWALL's advanced processing technology, the all new TZ Series **dramatically expands the comprehensive protection** at a performance level that will not compromise **network throughput**. Each TZ appliance is available as a SonicWALL TotalSecure™ solution, conveniently bundling all hardware and services needed for comprehensive protection.

The all new SonicWALL® TZ Series, including the **TZ 100, TZ 200** and **TZ 210** network security appliances, shatters these limitations by offering the revolutionary, fastest multi-layered network security in its class. Utilizing SonicWALL's industry-leading Unified Threat Management (UTM) and patented Reassembly-Free Deep Packet Inspection™* the TZ Series delivers in-depth protection at unparalleled performance. The all new TZ Series dramatically out performs their TZ 180 and 190 predecessors, with the entry level TZ 100 delivering two-and-a-half times the UTM throughput of its predecessors. The TZ Series cost-effectively integrates IPSec and SSL VPN remote access, VoIP, and optional 802.11b/g/n wireless with optional 3G wireless broadband. Designed for the needs of distributed enterprise sites, branch offices, small and midsize businesses, retailers and managed service providers, the TZ Series is the first affordable solution that can maximize the highest speeds available from modern ISPs while delivering full UTM protection.

Features and Benefits

Uncompromising performance, applying real-time scanning over state-of-the-art high-speed architecture, delivers up to Gigabit Ethernet speeds.

SonicWALL Reassembly-Free Deep Packet Inspection™ provides enterprise-class protection for key Internet services such as Web, e-mail, file transfers, Windows services and messaging.

SonicWALL Unified Threat Management (UTM) delivers real-time gateway protection against the latest viruses, spyware, intrusions, software vulnerabilities and other malicious code.

SonicWALL Comprehensive Anti-Spam Service utilizes real-time sender IP reputation analysis and cloud-based Advanced Content Management techniques to remove spam, phishing and virus laden messages from inbound SMTP-based e-mail before they reach your network. This service eliminates the need for less effective, slow responding and error prone real-time black list services.

SonicWALL Application Firewall offers granular application-level access controls to manage bandwidth and prevent leaks of sensitive or proprietary information.

Modular 3G wireless broadband and analog modem support can be used as either a primary or secondary WAN connection for business continuity or rapid deployment in remote locations.

Secure 802.11b/g/n wireless LAN (WLAN) technologies provide secure high-speed wireless connectivity with SonicWALL's wireless security enforcement.

Advanced IPSec and SSL VPN connectivity options provide secure, high-speed office-to-office and individual user remote access.

SonicWALL PortShield port-level security offers flexible protection from traffic on the WAN, DMZ, and devices inside your network by easily grouping ports into logical units.

Automated failover and failback ensures continuous uptime of VPN tunnels by diverting traffic over alternate WAN or WLAN connections in the event of primary connection failure.

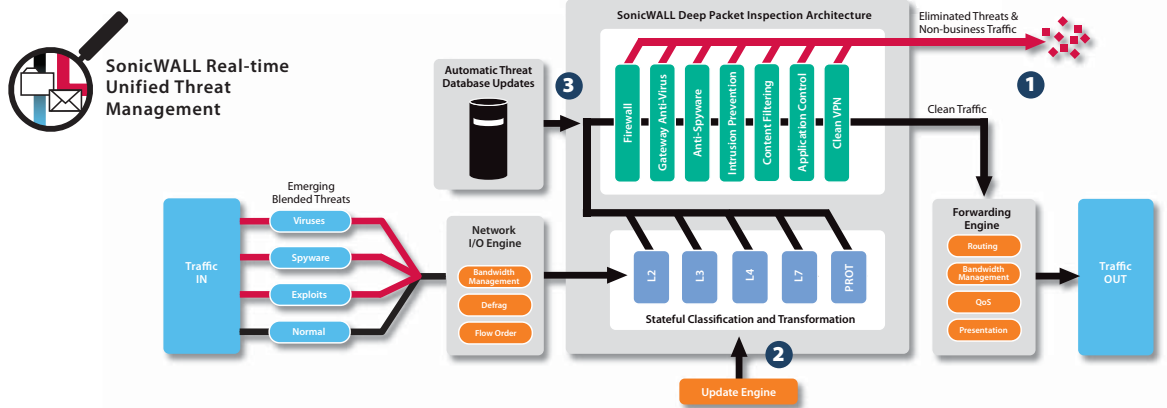
Intuitive configuration wizards simplify even the most complicated tasks, including VPN set-up, NAT configuration and public server configuration.

Robust **Voice and Video over IP (VoIP)** capabilities offer secure, standards-based support for sending voice (audio), streaming video and other media over IP-based networks.

Global Management System (GMS) provides comprehensive global management and reporting tools for simplified configuration, enforcement and management from a central location.

*U.S. Patent 7,310,815-A method and apparatus for data stream analysis and blocking.





Best-in-Class Threat Protection

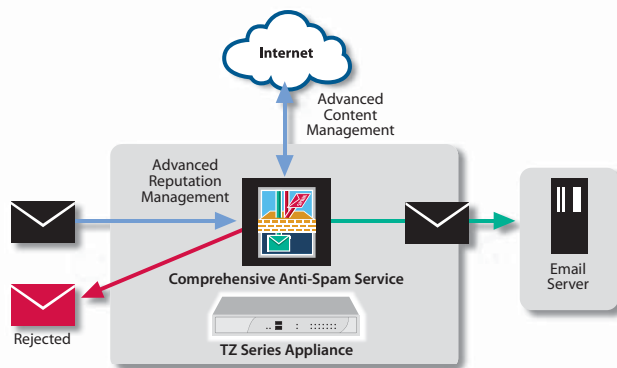
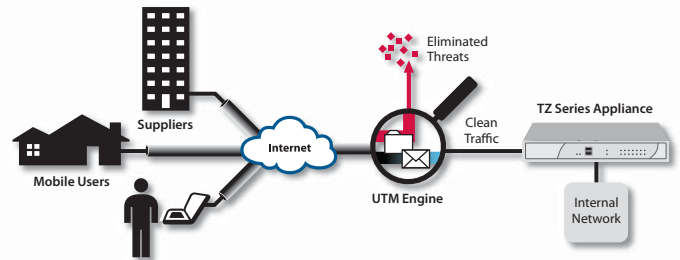
- 1 SonicWALL deep packet inspection protects against network risks such as viruses, worms, Trojans, spyware, phishing attacks, emerging threats and Internet misuse. Application Firewall adds highly-configurable controls to prevent data leakage and manage bandwidth at the application level.
- 2 The SonicWALL Reassembly-Free Deep Packet Inspection™ (RFDPI) engine comprehensively scans entire packets in real-time without stalling traffic

in memory. This functionality allows threats to be identified and eliminated over unlimited file sizes and unrestricted concurrent connections, without interruption.

- 3 The TZ Series provides dynamic network protection through continuous, automated security updates, protecting against emerging and evolving threats without requiring any administrator intervention.

SonicWALL Clean VPN™

The TZ Series includes innovative SonicWALL Clean VPN™ technology, which protects against vulnerabilities and decontaminates malicious code in traffic from remote users, mobile users and branch offices before it enters the corporate network, all without user intervention. The TZ Series supports both IPSec and SSL VPN termination.



New SonicWALL Comprehensive Anti-Spam Service

enables SonicWALL's fully-featured, market-leading protection against spam, phishing, viruses and malware with one simple check box. Using the same technology behind SonicWALL's award-winning email security product portfolio, you'll enjoy a 98% effectiveness rate against spam, and reduced bandwidth consumption by eliminating up to 80% of threats at the connection level. With no additional hardware, software or servers to purchase, you'll benefit from an integrated, single point of management, configuration and reporting.



Centralized Policy Management

The TZ Series can be managed using the SonicWALL Global Management System (GMS), which provides flexible, powerful and intuitive tools to centrally manage configurations, view real-time monitoring metrics and integrate policy and compliance reporting.

**SonicWALL's
TZ Series is the
ultimate security
platform for
distributed
and small
networks,
including remote
and branch
offices and
retail/POS
deployments**

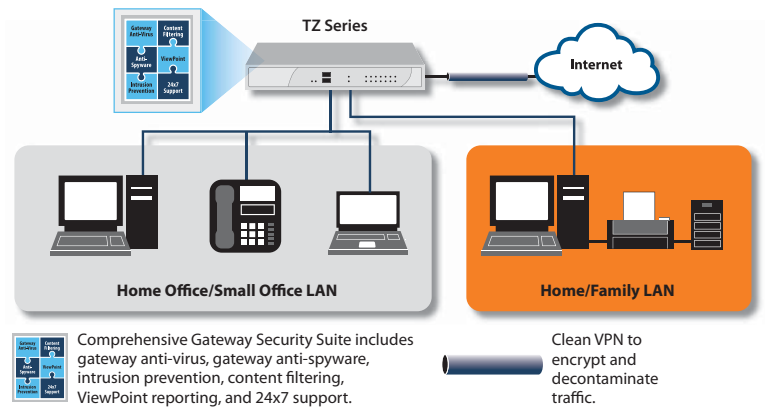
Deployments

Home Office/Small Office

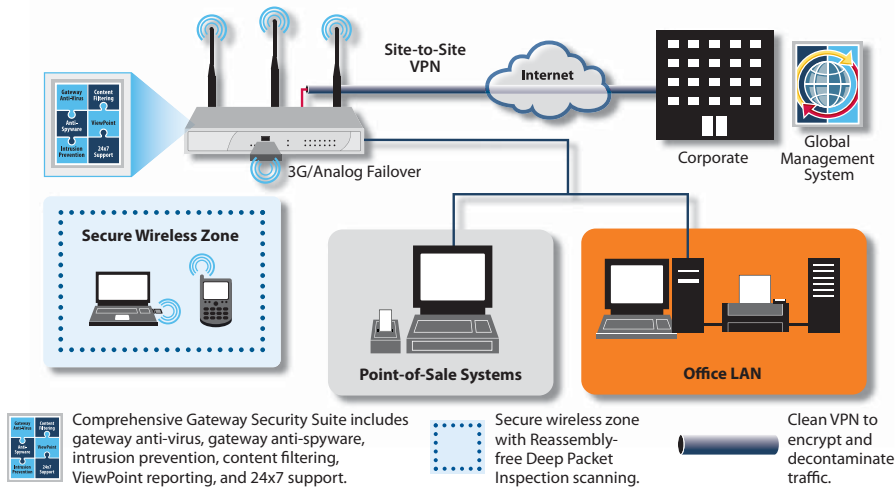
Designed as a complete Unified Threat Management (UTM) platform delivering business-class protection to home office networks, the TZ Series features PortShield technology, which provides secure segmentation of the home network from “work” equipment.

Technologies utilized:

- Unified Threat Management (Gateway Anti-virus, Anti-Spyware, Intrusion Prevention, Content Filtering, and Enforced Client Anti-virus)
- PortShield
- SSL VPN and IPSec VPN
- Optional 802.11n Clean Wireless



TZ 100 **TZ 200** **TZ 210**



Small Office/Retail

The TZ Series is a high-performance security platform for small professional offices and retail deployments with mission-critical needs. The TZ 200 and TZ 210 Series feature 3G connectivity through an integrated USB slot for use as either the primary or backup WAN connection.

Technologies utilized:

- Unified Threat Management (Gateway Anti-virus, Anti-Spyware, Intrusion Prevention, Content Filtering, and Enforced Client Anti-virus)
- 3G failover
- WAN and VPN failover
- PortShield
- 802.11n Clean Wireless
- Global Management System

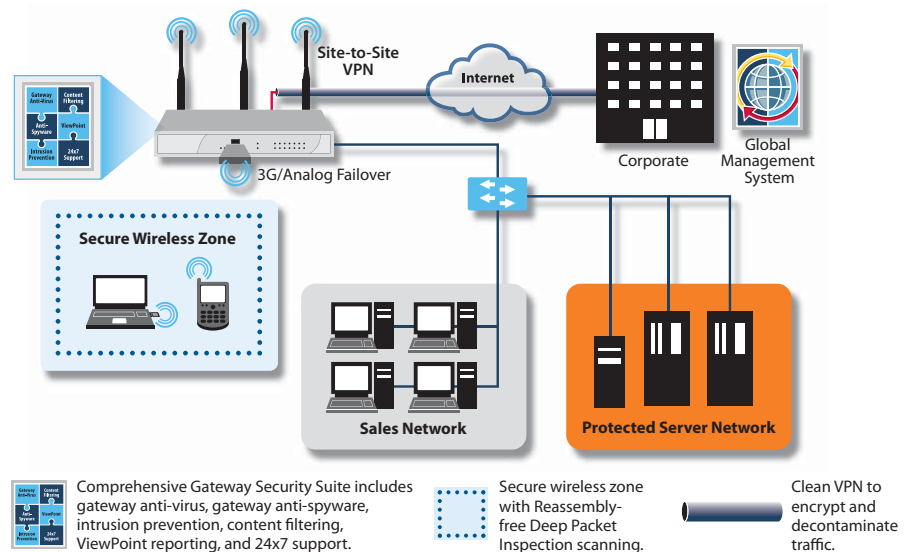
TZ 100 **TZ 200** **TZ 210**

Remote/Branch Office

The TZ 200 and TZ 210 Series are the fastest multi-layered network security solutions in their class, giving remote and branch offices unparalleled Unified Threat Management protection against continually evolving threats. PortShield offers network segmentation, while Application Firewall on the TZ 210 provides application classification and policy manage to control applications. Get security and segmentation, along with performance and reliability.

Technologies utilized:

- Unified Threat Management (Gateway Anti-virus, Anti-Spyware, Intrusion Prevention, Content Filtering, and Enforced Client Anti-virus)
- Comprehensive Anti-Spam Service
- SSL VPN and IPSec VPN
- 802.11n Clean Wireless
- Optional hardware failover
- Global Management System



TZ 100 **TZ 200** **TZ 210**

Specifications



SonicWALL TZ 100
01-SSC-8734
SonicWALL TZ 100 Wireless-N
01-SSC-8736 (International)
SonicWALL TZ 100 TotalSecure
01-SSC-8739
SonicWALL TZ 100 Wireless-N
TotalSecure 01-SSC-8728
(International)



SonicWALL TZ 200
01-SSC-8741
SonicWALL TZ 200 Wireless-N
01-SSC-8743 (International)
SonicWALL TZ 200 TotalSecure
01-SSC-8746
SonicWALL TZ 200 Wireless-N
TotalSecure 01-SSC-8729
(International)



SonicWALL TZ 210
01-SSC-8753
SonicWALL TZ 210 Wireless-N
01-SSC-8755 (International)
SonicWALL TZ 210 TotalSecure
01-SSC-8769
SonicWALL TZ 210 Wireless-N
TotalSecure 01-SSC-8782
(International)

| Firewall | All New TZ Series | | | |
|--|---|---|---|---|
| | TZ 180 Series | TZ 100 Series | TZ 200 Series | TZ 210 Series |
| SonicOS Version | SonicOS Standard | SonicOS Enhanced | SonicOS Enhanced | SonicOS Enhanced |
| Stateful Throughput¹ | 90 Mbps | 100 Mbps | 200 Mbps | 200 Mbps |
| GAV Throughput² | 10 Mbps | 35 Mbps | 50 Mbps | 70 Mbps |
| IPS Throughput² | 15 Mbps | 50 Mbps | 70 Mbps | 110 Mbps |
| UTM Throughput² | 10 Mbps | 25 Mbps | 35 Mbps | 50 Mbps |
| IMIX Throughput² | - | 40 Mbps | 50 Mbps | 110 Mbps |
| Maximum Connections | 6,000 | 6,000 | 8,000 | 10,000 |
| New Connections/Sec | 250 | 1,000 | 1,000 | 1,500 |
| Nodes Supported | 10/25/Unrestricted | | Unrestricted | |
| Denial of Service Attack Protection | | 22 classes of DoS, DDoS and scanning attacks | | |
| SonicPoints Supported | 16 | 1 | 2 | 16 |
| VPN | TZ 180 Series | TZ 100 Series | TZ 200 Series | TZ 210 Series |
| 3DES/AES Throughput³ | 30 Mbps | 75 Mbps | 75 Mbps | 75 Mbps |
| Site-to-Site VPN Tunnels | 2 (10 Node), 10 (25 Node) | 5 | 10 | 15 |
| Bundled GVC Licenses (Maximum) | 0 (10 Node), 1 (25 Node) | | | |
| Bundled SSL VPN Licenses (Maximum) | 5 (10 Node), 25 (25 Node) | 0 (5) | 2 (10) | 2 (25) |
| Encryption/Authentication | | DES, 3DES, AES (128, 142, 256-bit), MD5, SHA-1 | | |
| Key Exchange | | IKE, Manual Key, Certificates (X.509), L2TP over IPsec | | |
| Certificate Support | | Verisign, Thawte, Cybertrust, RSA Keon, Entrust and Microsoft CA for SonicWALL-to-SonicWALL VPN | | |
| VPN Features | | Dead Peer Detection, DHCP Over VPN, IPsec NAT Traversal, Redundant VPN Gateway | | |
| Global VPN Client Platforms Supported | | Microsoft® Windows 2000, Windows XP, Vista 32/64-bit | | |
| SSL VPN Platforms | | Microsoft Windows 2000/ XP/ Vista 32/64-bit, Mac OSX 10.4+, Linux FC3+/ Ubuntu 7+/ OpenSUSE | | |
| Security Services | TZ 180 Series | TZ 100 Series | TZ 200 Series | TZ 210 Series |
| Deep Packet Inspection Services | | Gateway Anti-Virus, Anti-Spyware and Intrusion Prevention | | |
| Content Filtering Service (CF5) | | HTTP URL, HTTPS IP, keyword and content scanning ActiveX, Java Applet, and cookie blocking | | |
| Enforced Client Anti-Virus and Anti-Spyware | | HTTPS, SMTP, POP3, IMAP and FTP, Enforced McAfee™ Clients E-mail attachment blocking | | |
| Comprehensive Anti-Spam Service | - | Yes | Yes | Yes |
| Application Firewall | - | - | - | Supported |
| Networking | TZ 180 Series | TZ 100 Series | TZ 200 Series | TZ 210 Series |
| IP Address Assignment | | Static, (DHCP, PPPoE, L2TP and PPTP client), Internal DHCP server, DHCP relay | | |
| NAT Modes | 1, 1many, many, many, transparent mode | 1:1, 1many, many:1, many:many, flexible NAT (overlapping IPs), PAT, transparent mode | | |
| VLANs | Portshield* | | Portshield | |
| DHCP | | Internal server, relay | | |
| Routing | RIPv1/v2 advertisement, static routes | | OSPF, RIP v1/v2, static routes, policy-based routing, multicast | |
| Authentication | | XAUTH/RADIUS, Active Directory, SSO, LDAP, internal user database | | |
| User Database | 100/150* users | 25 users | 100 users | 150 users |
| VoIP | | Full H.323v1-5, SIP, gatekeeper support, outbound bandwidth management, VoIP over WLAN, deep inspection security, full interoperability with most VoIP gateway and communications devices | | |
| System | TZ 180 Series | TZ 100 Series | TZ 200 Series | TZ 210 Series |
| Zone Security | Yes* | Yes | Yes | Yes |
| Schedules | Yes | Yes | Yes | Yes |
| Object-based/Group-based Management | Yes* | Yes | Yes | Yes |
| DDNS | | Dynamic DNS providers include: dyndns.org, yi.org, no-ip.com and changelp.com | | |
| Management and Monitoring | | Local CLI, Web GUI (HTTP, HTTPS), SNMP v2; Global management with SonicWALL GMS | | |
| Logging and Reporting | | ViewPoint, Local Log and Syslog | | |
| Hardware Failover | - | - | Active/Passive | Active/Passive with StateSync |
| Anti-Spam | | RBL support, Allowed/Blocked Lists, Optional SonicWALL Anti-Spam Desktop available* | | |
| Load Balancing | | Yes, Outgoing and incoming* | | |
| Standards | | TCP/IP, UDP, ICMP, HTTP, HTTPS, IPsec, ISAKMP/IKE, SNMP, DHCP, PPPoE, L2TP, PPTP, RADIUS, IEEE 802.3 | | |
| Built-in Wireless LAN | TZ 180 Series | TZ 100 Series | TZ 200 Series | TZ 210 Series |
| Standards | 802.11b/g (WEP, WPA, WPA2, 802.11i, TKIP, PSK, 02.1x, EAP-PEAP, EAP-TTLS) | 802.11b/g/n (WEP, WPA, WPA2, 802.11i, TKIP, PSK, 02.1x, EAP-PEAP, EAP-TTLS) | | |
| Antennas (5 dBi Diversity) | | Dual, detachable, external | | Triple, detachable, external |
| Radio Power | | | 18 dBm maximum | |
| 802.11b | 13 dBm maximum | | 18 dBm @ 6-48 Mbps | |
| 802.11g | 20 dBm maximum @ 6-48 Mbps, 19dBm @ 54 Mbps | | 14 dBm @ 54 Mbps | |
| 802.11n | - | | 19 dBm MCS 0, 12 dBm MCS 15 | |
| Radio Receive Sensitivity | | | -90 dBm @ 11Mbps | |
| 802.11b | -89 dBm @ 11 Mbps | | | |
| 802.11g | -91 dBm @ 6 Mbps, 73 dBm @ 54 Mbps | | -91 dBm @ 6Mbps, -74 dBm @ 54Mbps | |
| 802.11n | - | | -89 dBm MCS 0, -70 dBm MCS 15 | |
| Hardware | TZ 180 Series | TZ 100 Series | TZ 200 Series | TZ 210 Series |
| Interfaces | (7) 10/100 | (5) 10/100 | (5) 10/100 | (2) 10/100/1000, (5) 10/100 |
| Flash Memory/RAM | 16 MB/128 MB | 16 MB/128 MB | 16 MB/256 MB | 32 MB/256 MB |
| 3G Wireless/Modem | | | With USB 3G Adapter/Modem | |
| USB Ports | | | 1 | 2 |
| Power Input | | 100 to 240 VAC, 50-60 Hz, 1 A | | |
| Max Power Consumption | 7.7 W/10.0 W (TZ 180 W) | 7.5 W/9.5 W (TZ 100 W) | 8.6 W/10.6 W (TZ 200 W) | 9.4 W/11.7 W (TZ 210 W) |
| Total Heat Dissipation | 26 BTU/34 BTU (TZ 180 W) | 26 BTU/33 BTU (TZ 100 W) | 30 BTU/37 BTU (TZ 200 W) | 32 BTU/40 BTU (TZ 210 W) |
| Certifications | ICSA Firewall 4.1, Common Criteria EAL4+, FIPS 140-2 Level 2, VPNC AES* | | VPNC AES | |
| Certifications (Pending) | | | ICSA Firewall 4.1, FIPS | |
| Form Factor and Dimensions | 8.3 x 4.9 x 1.1 in (21.1 x 12.4 x 2.8 cm) | 2.87 x 8.98 x 9.06 in (7.3 x 22.8 x 23cm) | 2.87 x 8.98 x 9.06 in (7.3 x 22.8 x 23cm) | 8.9 x 5.9 x 1.9 in (22.5 x 14.9 x 3.6 cm) |
| Weight | 1.6 lbs/0.73 kg (TZ 180 W) 1.9 lbs/0.86 kg (TZ 180 W) | 2.0 lbs/0.91 kg (TZ 100 W) 2.5 lbs/1.1 kg (TZ 100 W) | 2.0 lbs/0.91 kg (TZ 200 W) 2.5 lbs/1.1 kg (TZ 200 W) | 2.0 lbs/0.91 kg (TZ 210 W) 2.8 lbs/1.3 kg (TZ 210 W) |
| WEED Weight | 2.2 lbs/1.0 kg (TZ 180 W) 2.4 lbs/1.1 kg (TZ 180 W) | 1.5 lbs/0.7 kg (TZ 100 W) 1.8 lbs/0.8 kg (TZ 100 W) | 1.5 lbs/0.7 kg (TZ 200 W) 1.8 lbs/0.8 kg (TZ 200 W) | 2.8 lbs/1.3 kg (TZ 210 W) 3.1 lbs/1.4 kg (TZ 210 W) |
| Major Regulatory Compliance | | FCC Class B, ICES Class B, CE, C-Tick, VCCI Class B, MIC, NOM, UL, cUL, TUV/GS, CB, WEEE, RoHS | | |
| Environment/ Humidity | | 32-105° F, 0-40° C / 5-95% non-condensing | | |
| MTBF | 8.5 Years | 8 Years Minimum | | |

¹Testing Methodologies: Maximum performance based on RFC 2544 (for firewall). Actual performance may vary depending on network conditions and activated services. ²Throughput measured using Spirent HTTP throughput test. ³VPN throughput measured using UDP traffic at 1280 byte packet size adhering to RFC 2544. *With SonicOS Enhanced. **3G card and modem are not included. See <http://www.sonicwall.com/us/products/cardsupport.html> for supported USB devices.

SonicWALL, Inc.

1143 Borregas Avenue
Sunnyvale CA 94089-1306

T +1 408.745.9600
F +1 408.745.9300

www.sonicwall.com

